

Card Encoder Accessories



ADD-ON

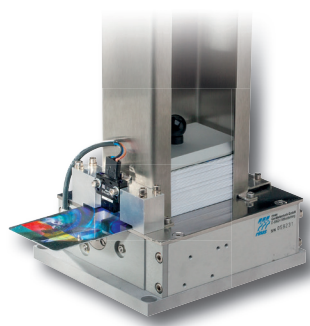
Product Add-Ons for the Rinas personalization stations

OEM
QUALITY ASSURANCE
PRODUCTION
DESKTOP
ACCESSORIES

RINAS ADD-ON

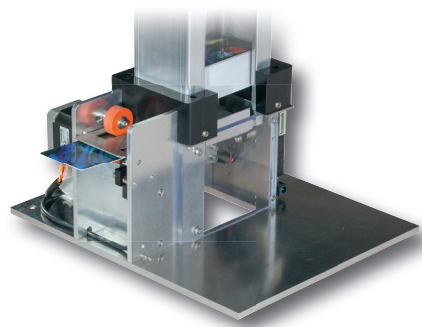
RINAS ADD-ON – ACCESSORIES THAT COMPLEMENT THE RINAS ENCODERS

Complementing its well-known encoding solutions, Rinas also provides a range of tried-and-tested accessories, which can be combined with a stand-alone encoder to create a complete card personalization system.



Card separators

Rinas has two versions of card separator, both of which require an electronic logic controller and do not operate with compressed air or use vacuum components thereby enabling them to be used in an office environment. Precision engineered parts cater for industrial environments, especially where greater card throughput is required. The KVW separator has been designed to separate plastic cards of various thicknesses, and an individual calibration facility enables the customer to cater for a particular thickness. The PVW separator, on the other hand, is particularly suited to paper tickets or cards or where increased throughput is required.

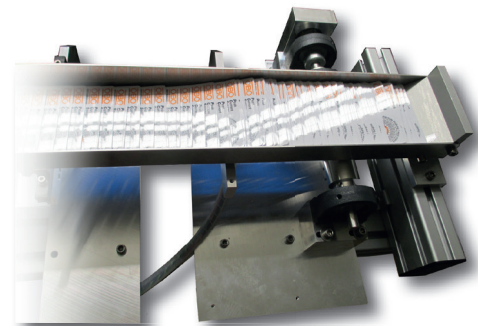


Card stackers

Our KLA and KLW stackers have a capacity of up to 500 cards, possess an integrated drive and have their own control system. All stackers offer a sorting option so that valid cards can be separated from bad ones. With the KLA and KLW, the cards can be removed during operation, and both have the option of quick emptying by removing the magazine (KLA) or by removing the card fork (KLW). Both the KLA and KLE can process different card thicknesses without conversion. The KLW is an ideal option for higher speeds and greater throughput volumes.

Additional accessories

Other accessories, such as a scanner for barcode or matrix code recognition as well as text, and monochrome printer unit are also available.



Card Separators

KVW

- Card thicknesses: from 0.5 mm to 1.3 mm
- Adjustable speed
- Throughput: max. 4,000 cph
- Capacity: 250/500 cards*
- "Empty" recognition
- Control via 'PBX' electronics
- Dimensions L/W/H (mm): 140/120/560 (600 cards)

PVW

- Card thicknesses: from 0.2 mm to 1.3 mm
- Adjustable speed
- Throughput: max. 14,000 cph
- Capacity: 250/500 cards*
- "Empty" recognition
- Control via 'PBX' electronics
- Dimensions L/W/H (mm): 140/120/560 (600 cards)

Card Stackers

KLW - Belt Stacker

- Horizontal stacker with overlapping
- Capacity: 500 cards
- On request longer
- Throughput: app. 9,000cph
- Good/bad selection possibility
- Different card thickness
- Standard: ID-1, optional special sizes
- Creating of batch units possible
- Power: +24V DC/3A
- Dimensions L/W/H (mm): 1.250/450/1.050

KLE - Downward Stacker

- Electrical level monitoring
- Capacity: 250 cards*
- Throughput: max. 10,000 cph
- "Full" recognition
- Good/bad selection possibility (optional)
- Differing card thicknesses without modification
- Additional 'PBX' electronic controller with RS232/CAN
- Dimensions L/W/H (mm): 150/85/480

KLA - Upward Stacker

- Capacity: 500 cards*
- Throughput: max. 3,700 cph
- "Full" recognition
- Good/bad selection
- Differing card thicknesses without modification
- Integrated transport for card transfer
- Integrated electronics with RS232 and CAN
- Power: +24V DC/3A
- Dimensions L/W/H (mm): 240/180/610

PBX Electronic Controller

- Controller for KVW, PVW and KLE
- Interfaces: CAN (RS232 optional)
- Control software for parameterization or card separation via an external contact
- Power: +24V DC/3A
- Dimensions L/W/H (mm): 130/70/45

* Card capacities are based on cards with a thickness of 0.8 mm

